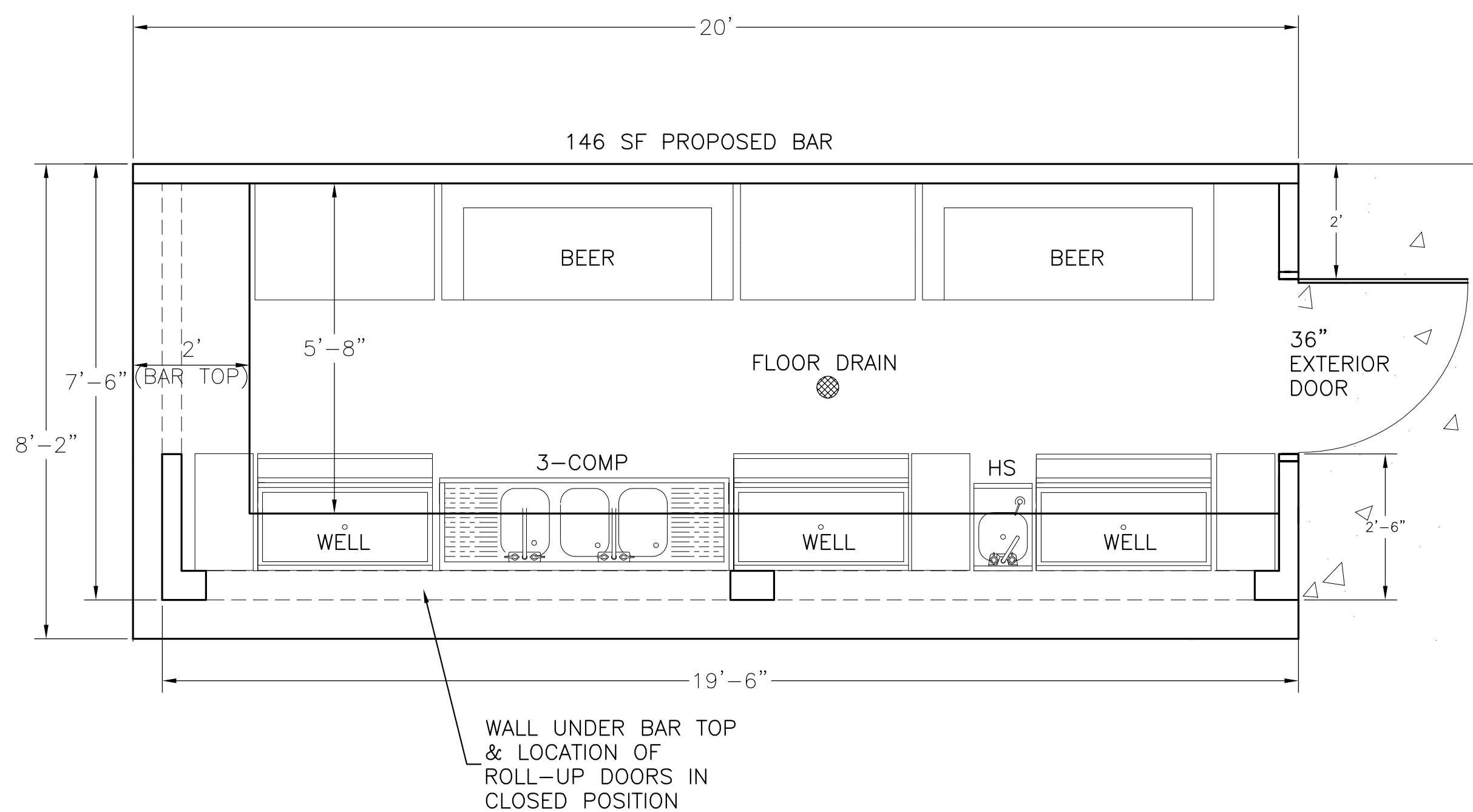
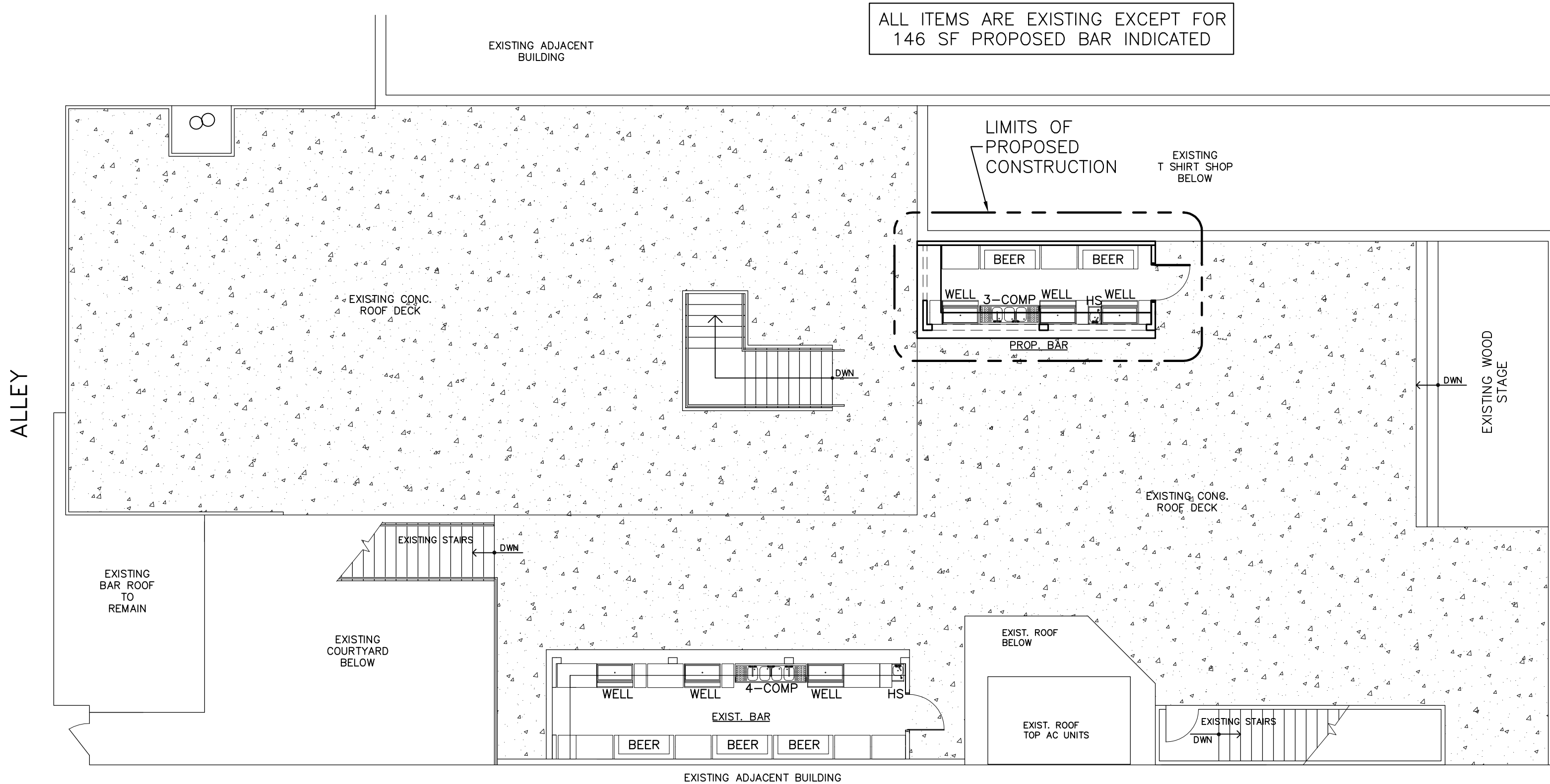


PROPOSED BAR CROSS-SECTION
NOT TO SCALE

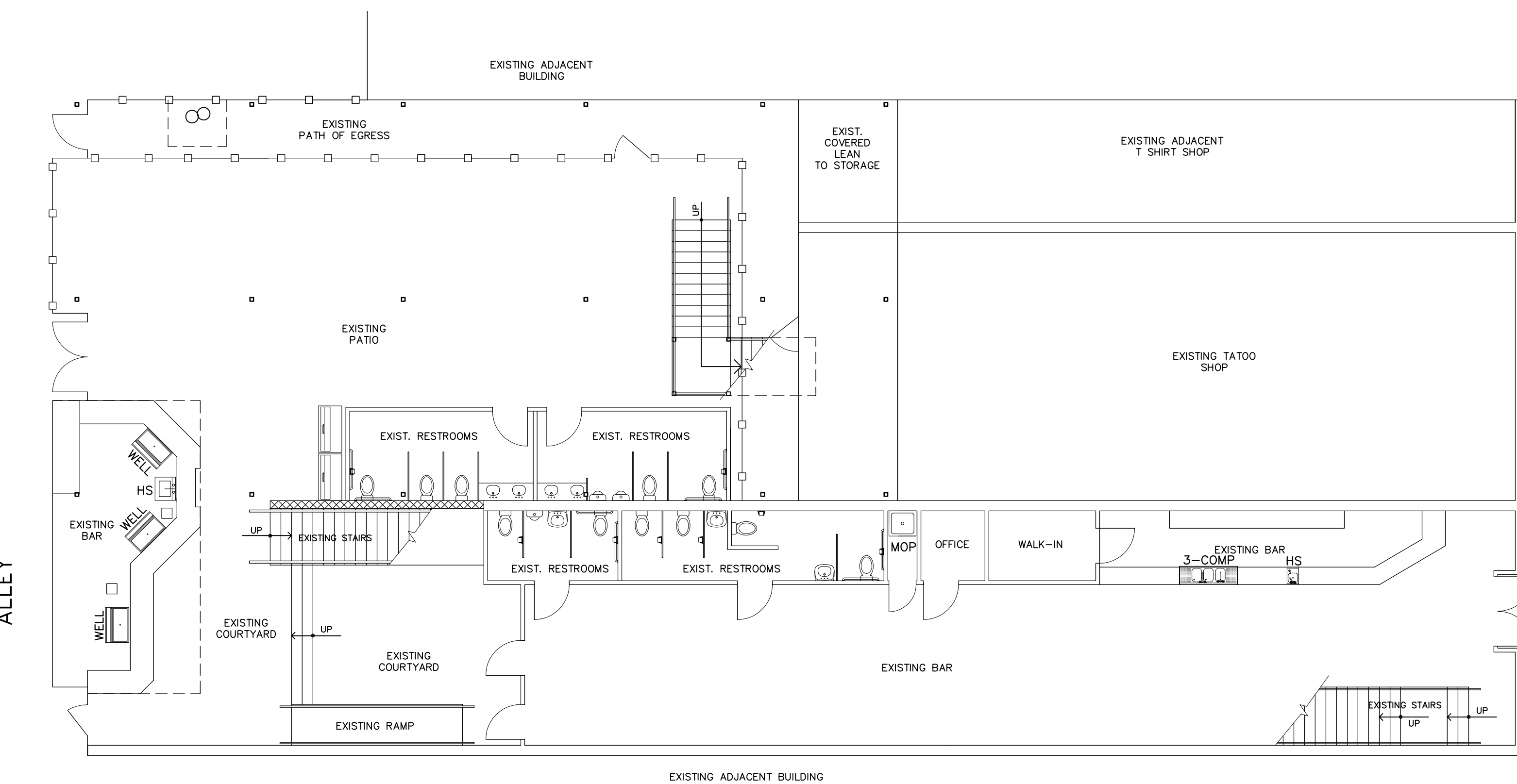
FIXTURES LEGEND	
HS	HAND SINK
MOP	MOP SINK
3-COMP	3 COMPARTMENT SINK
4-COMP	4 COMPARTMENT SINK
WELL	WELL / ICE BIN
ICE	ICE MACHINE
BEER	REACH IN BEER COOLER



PROPOSED BAR FLOOR PLAN
SCALE: 1/2" = 1'



SECOND FLOOR FLOOR PLAN
SCALE: 1/8" = 1'



FIRST FLOOR FLOOR PLAN
SCALE: 1/8" = 1'

AUSTIN/TRAVIS COUNTY HEALTH AND HUMAN SERVICES DEPARTMENT

PUBLIC HEALTH AND COMMUNITY SERVICES DIVISION, ENVIRONMENTAL AND CONSUMER HEALTH UNIT

STANDARD NOTES:

1. THE ESTABLISHMENT MUST COMPLY WITH TEXAS FOOD ESTABLISHMENT RULES (TFER) AND ALL CITY OF AUSTIN CODES AND ORDINANCES.

2. ALL FLOORS, WALLS, CEILINGS AND FIXTURES SHALL BE CONSTRUCTED FROM MATERIALS THAT ARE SMOOTH, DURABLE, EASILY CLEANABLE AND NON ABSORBENT.

2A. FLOORS: SEAL CONCRETE OR SEAL GROUT OF QUARRY TILE FLOORS OR PROVIDE AN APPROVED FLOOR COVERING.

2B. CEILINGS OVER OPEN FOOD, ICE, WARE WASHING AREAS AND RESTROOMS MUST MEET CONSTRUCTION CRITERIA. NO OPEN RAFTERS, TRUSSES GRID WORK, DUCT WORK, UTILITY LINES OR PIPES. NO OPEN TO STRUCTURE. LIGHTS MUST BE SHIELDED.

2C. PROVIDE BASEBOARDS OR COVING TO ALL NON MASONRY FLOOR/WALL JUNCTURES.

3. ALL REFRIGERATION MUST BE CAPABLE OF MAINTAINING POTENTIALLY HAZARDOUS FOODS AT OR BELOW 41 F.

4. DRAIN BOARDS MUST BE PROVIDED ON EACH END OF THE WARE WASHING SINK. ONE MUST BE INTEGRAL, THE OTHER MAY BE A CART.

5. DRAIN LINES FROM CULINARY SINKS, ICE MACHINES, ICE STORAGE BINS AND WARE WASHING SINKS MUST BE PROVIDED WITH AT LEAST A ONE INCH AIR GAP, AND BE DRAINED TO AN APPROVED WASTEWATER SYSTEM.

6. DOORS OPENING TO THE EXTERIOR OF THE FACILITY MUST BE SELF-CLOSING AND TIGHT FITTING. OPERABLE WINDOWS MUST BE SCREENED. PROVIDE SCREENS TO NEW DOUBLE DOORS OR PROVIDE A KITCHEN THAT IS A SEPARATE ENCLOSED ROOM.

7. TRASH RECEPTACLES, DUMPSTERS, AND GREASE DISPOSAL CONTAINERS MUST BE PLACED ON A MACHINE LAID ASPHALT OR CONCRETE PAD.

8. AN ATMOSPHERIC VACUUM BREAKER OR BACK FLOW PREVENTION DEVICE MUST BE INSTALLED ON ALL THREADED HOSE BIDS INSIDE AND OUTSIDE THE ESTABLISHMENT.

9. RESTROOMS REQUIRE: FORCED AIR VENTILATION TO THE OUTSIDE, SOLID SELF CLOSING DOORS AND HOT (100 F MIN) AND COLD WATER DELIVERED UNDER PRESSURE THROUGH A MIXING VALVE DRAINED TO THE SEWER TO LAVATORIES.

NOTES:

1. FINAL FINISHES:

FLOORS - SEALED CONCRETE

WALLS - FRP AND SEALED SHEETROCK

CEILINGS - SEALED TONG & GROVE WOOD PANELS AND VINYL PANELS

2. ALL CONSTRUCTION WILL BE TO 2009 I.B.C AND CITY OF AUSTIN REQUIREMENTS.

WOODY CONSTRUCTION
310 E. 6TH ST.
AUSTIN, TEXAS 78701
(512) 748-7730

BLIND PIG - NEW UPSTAIRS BAR
317 E. 6TH ST., AUSTIN, TEXAS 78701
FLOOR PLAN
(EXISTING AND PROPOSED)

Sheet Number
A-1